



Micromodule: activelinks

How do you incorporate active links into presentations?



Why would you want to link to the Internet during a presentation?

Nothing impresses people more than seeing the real thing. Today we talk about the Internet, we work with the Internet, we recreate on the Internet. It often helps to show others what we are talking about.

How do you use links in a document or presentation?

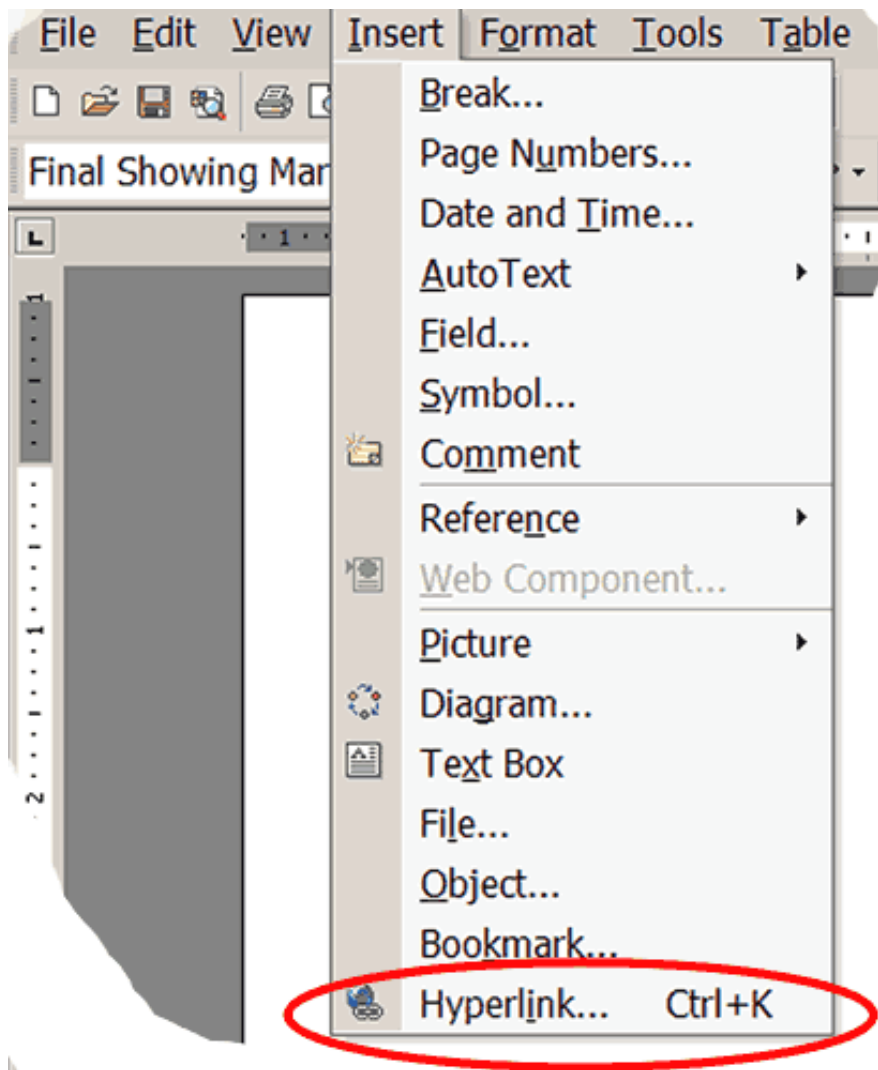
Word processors are very sophisticated. They do the work for you. When you type your presentation and want to add a link, just type the full URL: <http://21cif.imsa.edu/>. Usually the word processor will create the hyperlink for you.

Is there another way to insert a URL into a document?



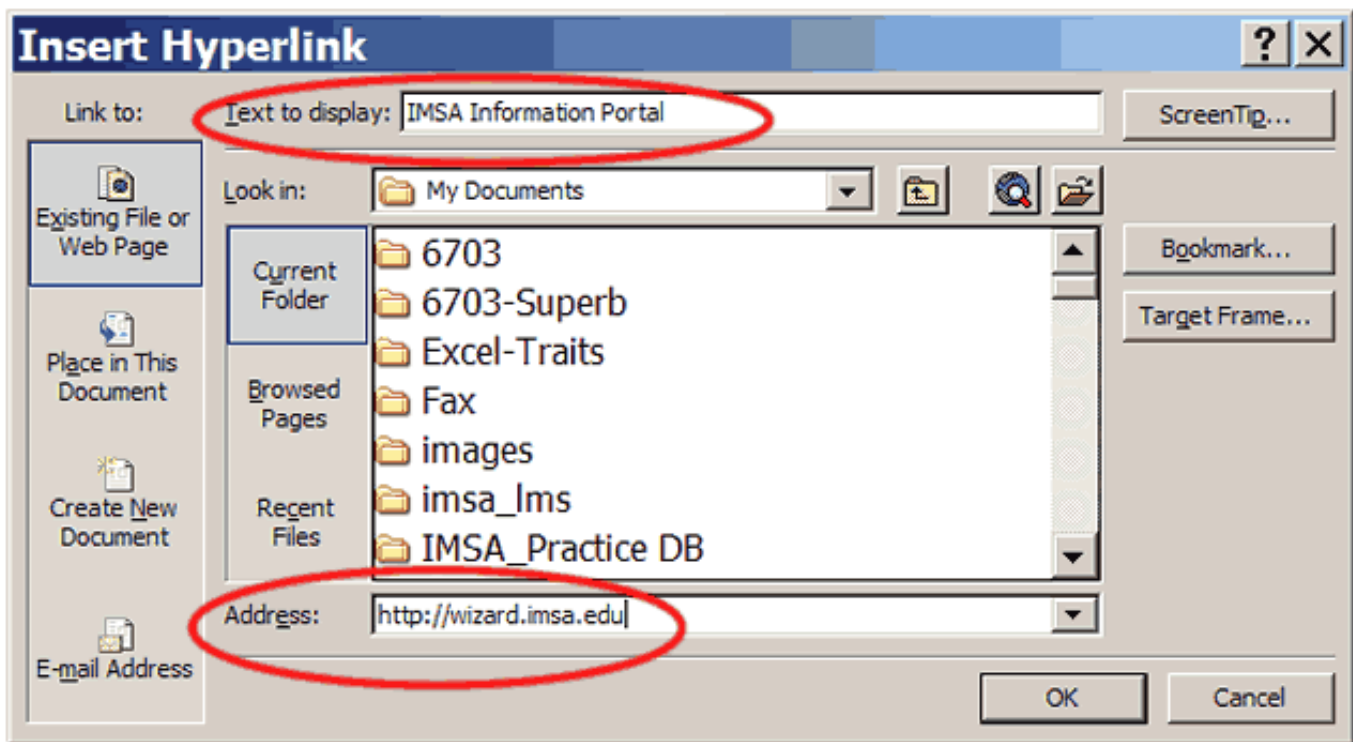
Some word processors offer a button that looks like a link of chain under the earth. This is the Hyperlink option in button form.

You can also use the Insert Menu to insert a Hyperlink.



Type the name you wish to use to represent the link in the "Text to display" box.

Type the actual URL in the Address Box. When you click OK, the new link will be placed in your document.



You will know the link is active when the text turns blue and is underlined. <http://21cif.imsa.edu>

How do you use links in a Power Point presentation?

Power Point is the most commonly used presentation software in both the education and business worlds. It now changes URL's for you, exactly as word processors. If you want to link to a URL without showing the actual URL, type the words you want to show into the "text to display" box. That is how I linked to the same URL from the words "Owl Mail".

Power Point Presentation

- This is an example of a Power Point Presentation using active links
- [Owl Mail](http://www.midgefrazel.net/owlmail.html) is a web site designed for teachers and librarians. It links to dozens of sites related to the Harry Potter reading phenomena.



<http://www.midgefrazel.net/owlmail.html>

When presenting, you click on the link to open a live browser and view the Internet page. This means you must have your computer hooked up to a live modem or Ethernet connection.

Checking this and the projector are very important, night before, preparations when planning a presentation. To continue your presentation after viewing the web site, minimize or close your browser window. This returns you to the presentation window, which should have remained underneath on the page you just left.

Authored by Lora K. Kaisler 2003



©Copyright 2002-2005 Illinois Mathematics and Science Academy

Last Updated: 2005-06-17